

Make a Card



1. Fold the card in half

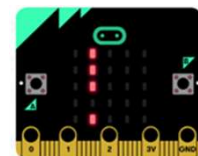
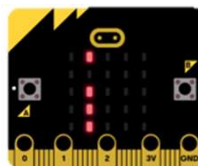
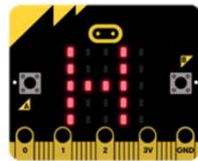
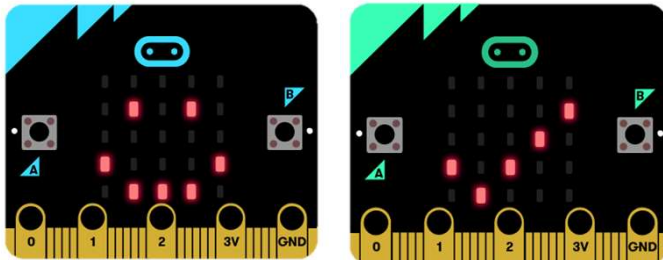


2. Glue the backs together



3. Cut along the dashed line

Display Cards



Display Cards

Use these cards in this order:

1. Say Hello
2. Add Your Name
3. Display Image
4. Create an Emoji
5. Tell Time
6. Make a Wristband
7. Make a Badge

microbit.org/scratch



microbit.org/scratch



Make a Card



1. Fold the card in half



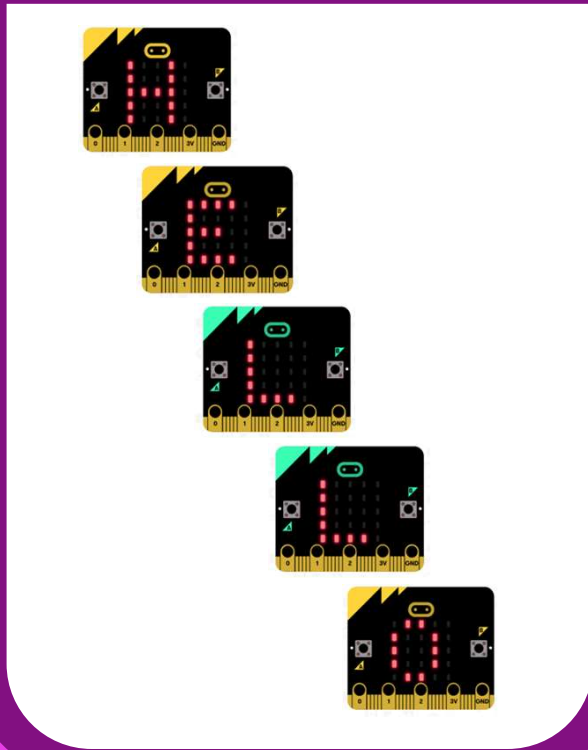
2. Glue the backs together



3. Cut along the dashed line

Say Hello

Make your micro:bit display a greeting.



microbit.org/scratch

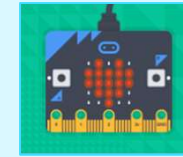
1

 micro:bit

Say Hello

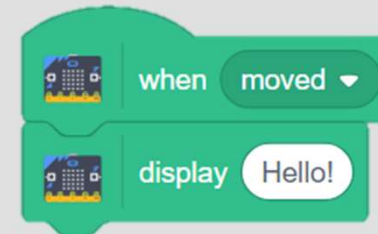
microbit.org/scratch

GET READY

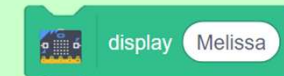


Connect your micro:bit to Scratch.

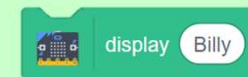
ADD THIS CODE



TRY IT



Move your micro:bit. Can you read the message?



CHALLENGE: What else can you make the display say?



Make a Card



1. Fold the card in half



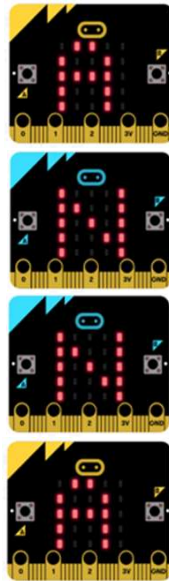
2. Glue the backs together



3. Cut along the dashed line

Add Your Name

Program the micro:bit to display your name.

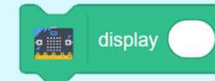
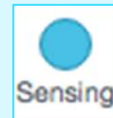


ANNA

Add Your Name

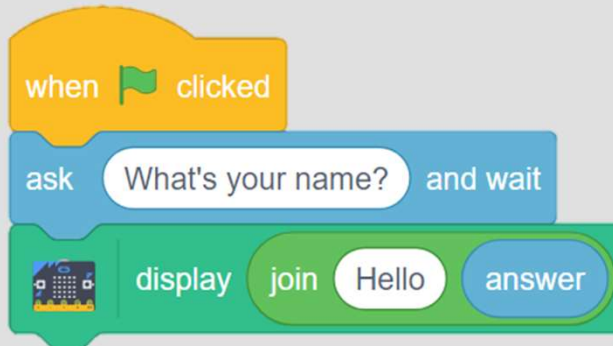
microbit.org/scratch

GET READY



Use the Sensing blocks to interact with your micro:bit.

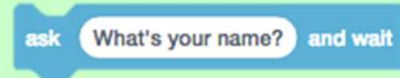
ADD THIS CODE



Combine your answer into a phrase.

TRY IT

Start the program and type your name. What happens on your micro:bit?



microbit.org/scratch

2



Make a Card



1. Fold the card in half



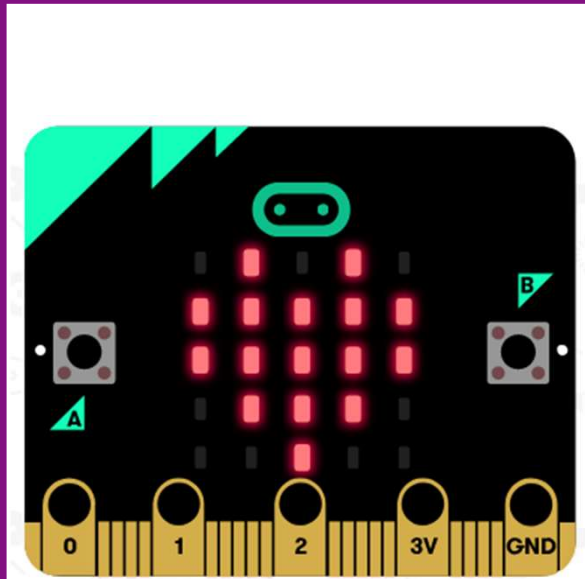
2. Glue the backs together



3. Cut along the dashed line

Display Image

Depict an image on your display.



microbit.org/scratch

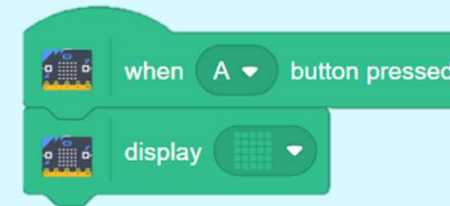
3

micro:bit

Display Image

microbit.org/scratch

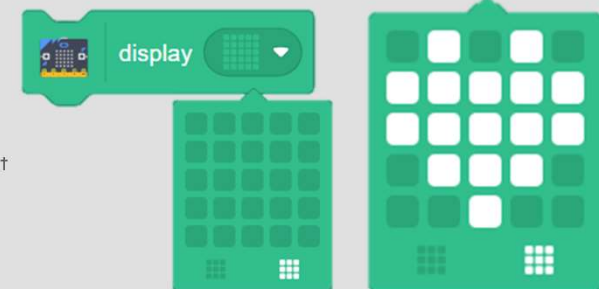
ADD THIS CODE



MAKE A DESIGN

Use the 5x5 grid to create your design.

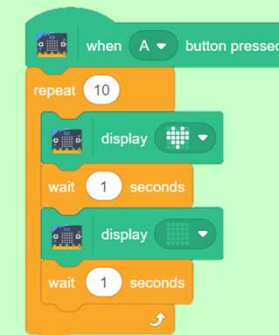
Turn on/off each light by clicking on the desired blocks.



TRY IT

Click the **A button** to display the image on your micro:bit.

CHALLENGE: Can you make the lights in your image blink on and off repeatedly?



Make a Card



1. Fold the card in half



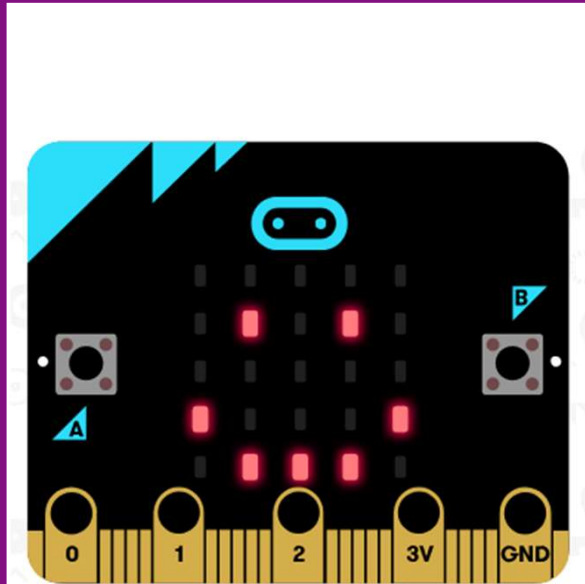
2. Glue the backs together



3. Cut along the dashed line

Create an Emoji

Create your own emoji for the display.



microbit.org/scratch

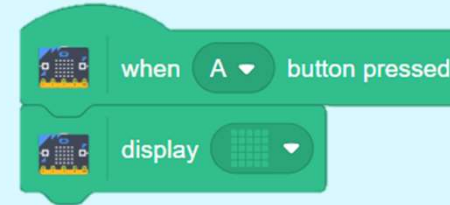
4

micro:bit

Create an Emoji

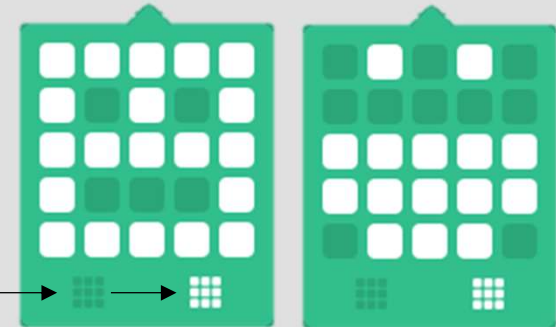
microbit.org/scratch

ADD THIS CODE



MAKE A DESIGN

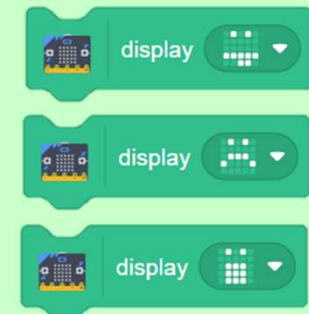
Click the individual blocks to turn them on in your design.



TRY IT

Click the **A button** to display the image on your micro:bit.

CHALLENGE: What other emojis can you create?



Make a Card



1. Fold the card in half



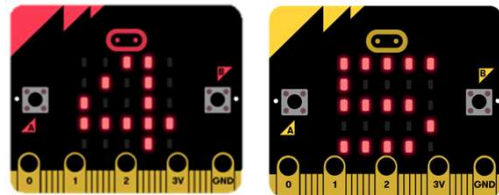
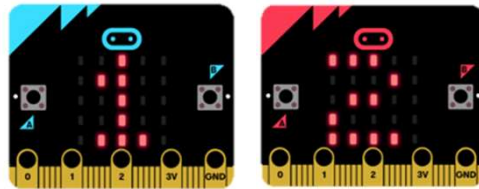
2. Glue the backs together



3. Cut along the dashed line

Tell Time

Display the correct time on your micro:bit.



microbit.org/scratch

5

 micro:bit

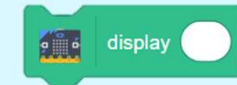
Tell Time

microbit.org/scratch

GET READY

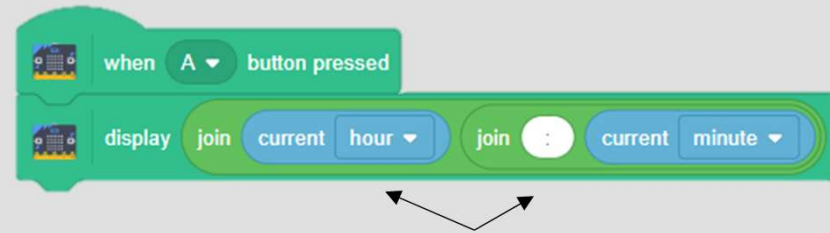


current minute



Use the Sensing blocks to interact with your micro:bit.

ADD THIS CODE



Join the current hour and minute together using these Operator blocks.

TRY IT

Click the **A** button to display the time on your micro:bit.

CHALLENGE: What other information can you make your micro:bit display?

current hour

year
month
date
day of week
✓ hour
minute
second

Make a Card



1. Fold the card in half



2. Glue the backs together



3. Cut along the dashed line

Make a Wristband

Wear your micro:bit on your wrist!



Based on project from Microsoft workshop

microbit.org/scratch

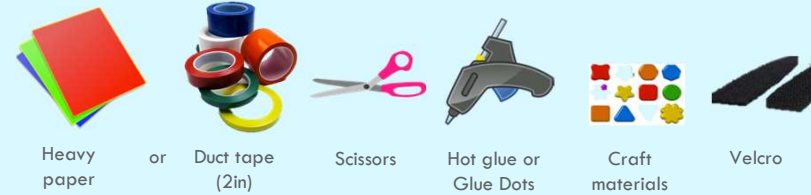
6



Make a Wristband

microbit.org/scratch

MATERIALS



Heavy paper

or

Duct tape (2in)

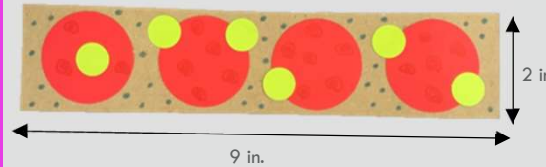
Scissors

Hot glue or Glue Dots

Craft materials

Velcro

PROCEDURE



Use heavy paper or folded Duct tape to create the wristband.

Decorate with craft materials.



Front



Back

Adhere Velcro fasteners.

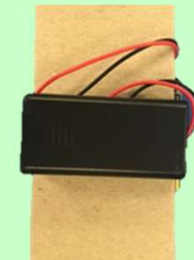
TRY IT



Use a small amount of hot glue or a Glue Dot to secure your micro:bit to the front of the wristband.

Attach the battery pack to the back.

***Hot glue placed on the back of the micro:bit (avoiding the pins) will not cause harm.



Make a Card



1. Fold the card in half



2. Glue the backs together



3. Cut along the dashed line

Make a Badge

Wear your micro:bit on your shirt!



microbit.org/scratch

7



Make a Badge

microbit.org/scratch

MATERIALS



Craft foam



Scissors



Hot glue or
Glue Dots



Craft
materials

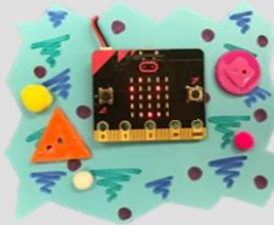


String



Paper
clip

PROCEDURE



BACK

Use foam to design the shape of your badge. Decorate with craft supplies.

Attach your micro:bit with hot glue to the front of the badge. Connect the battery pack to the back.

TRY IT

Add a paperclip to the back of the battery pack to clip the badge onto your shirt!

To wear your badge as a necklace, poke a hole at each of the top corners and attach a string.

***Hot glue placed on the back of the micro:bit (avoiding the pins) will not cause harm.

